

## Network Statistics for Traffic to Ins2.cbr1.internode - August 2009

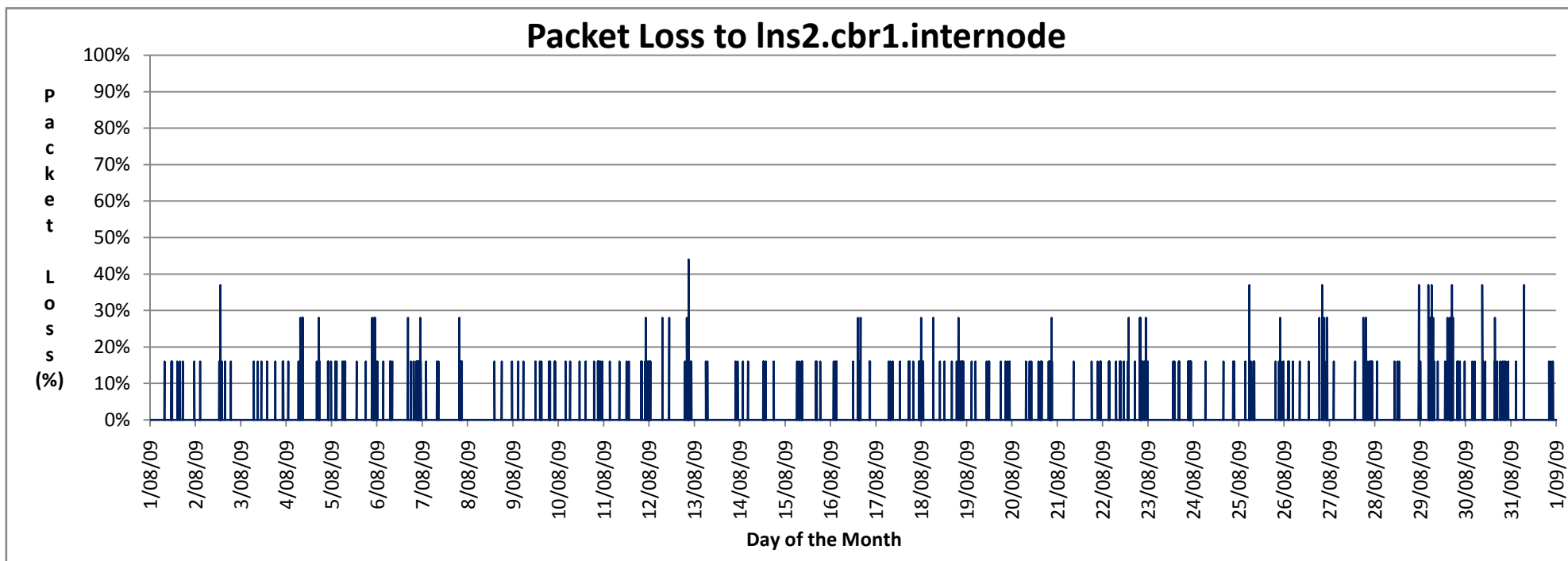
### Overall Statistics - 1st August to 31st August 2009

Return Trip > 400ms	27.8%
Return Trip between 200ms - 400ms	13.7%
Return Trip < 200ms	58.4%
Probes with Packet Loss	3.5%

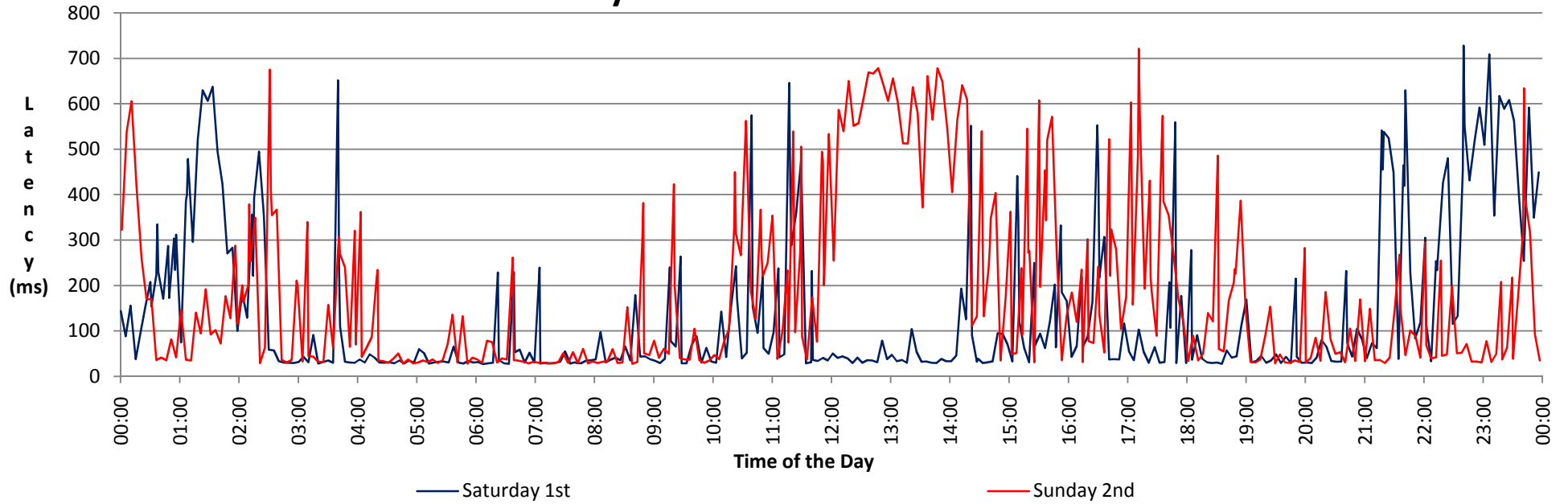
### Peak Time Statistics - 1st August to 31st August 2009

Return Trip > 400ms	57.07%
Return Trip > 200ms	74.08%
Return Trip < 200ms	25.92%
Probes with Packet Loss	20.93%

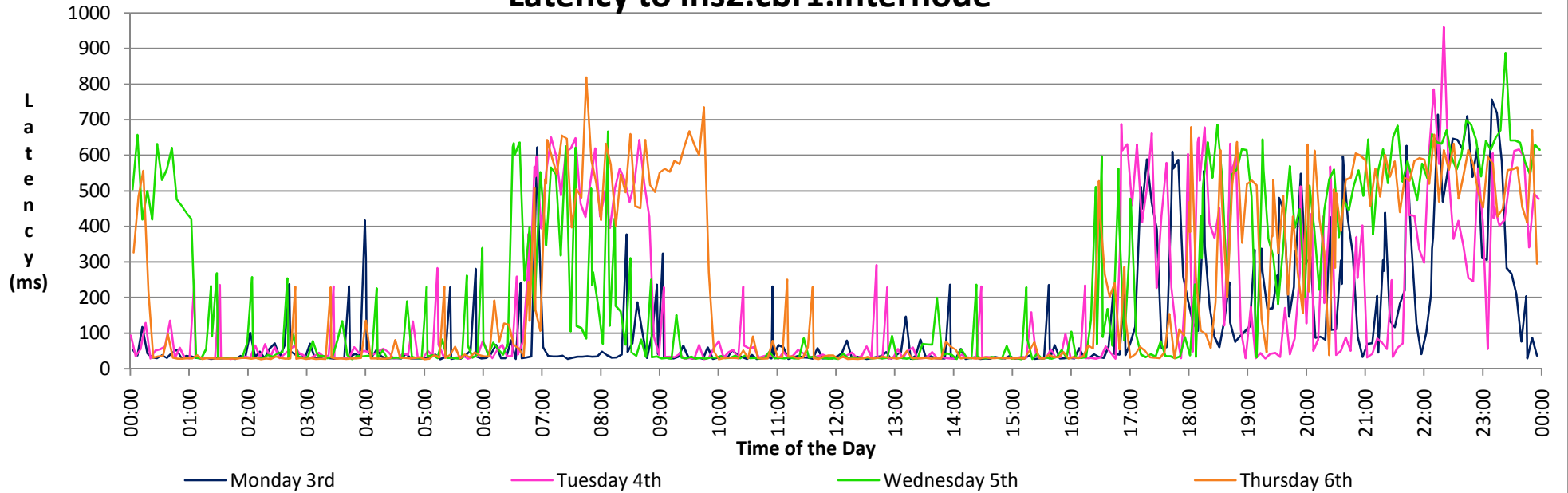
Trip Statistics	Time (ms)	Occurred at
Longest Return Trip Value	1022.37	23/8/2009 22:16
Shortest Return Trip Value	26.15	27/8/2009 5:32
Average Return Trip Time - Overall	219.92	
Average Return Trip Time - Peak	387.17	
Average Return Trip Time - Off Peak	186.51	



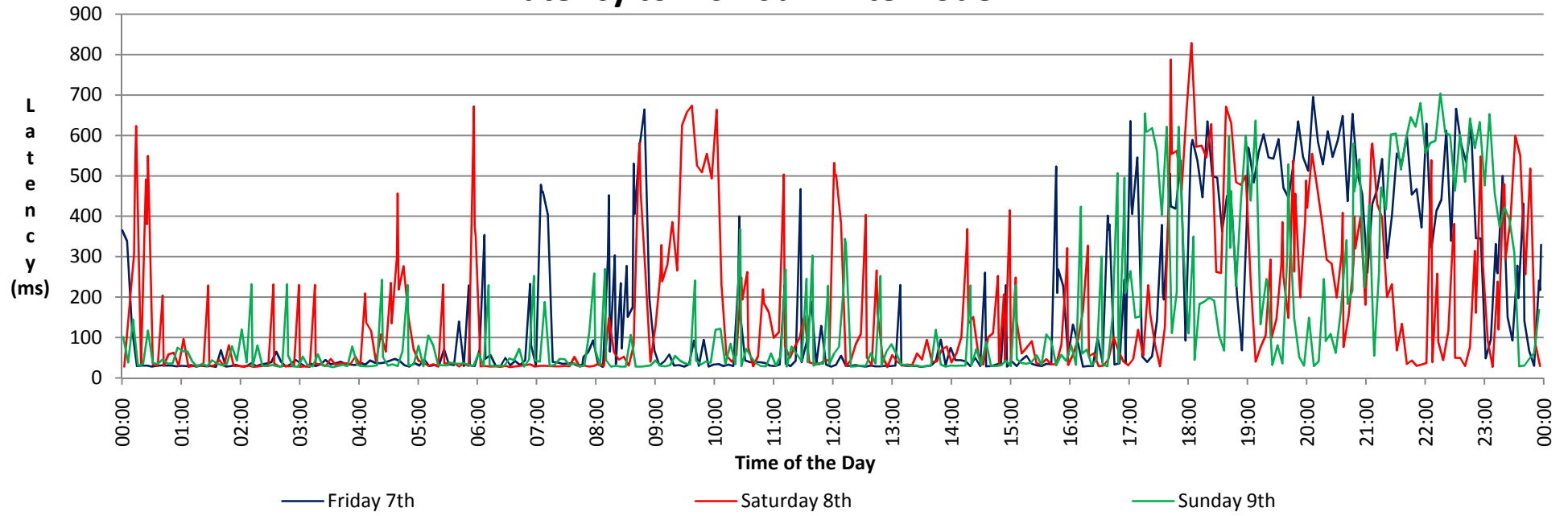
### Latency to Ins2.cbr1.internode



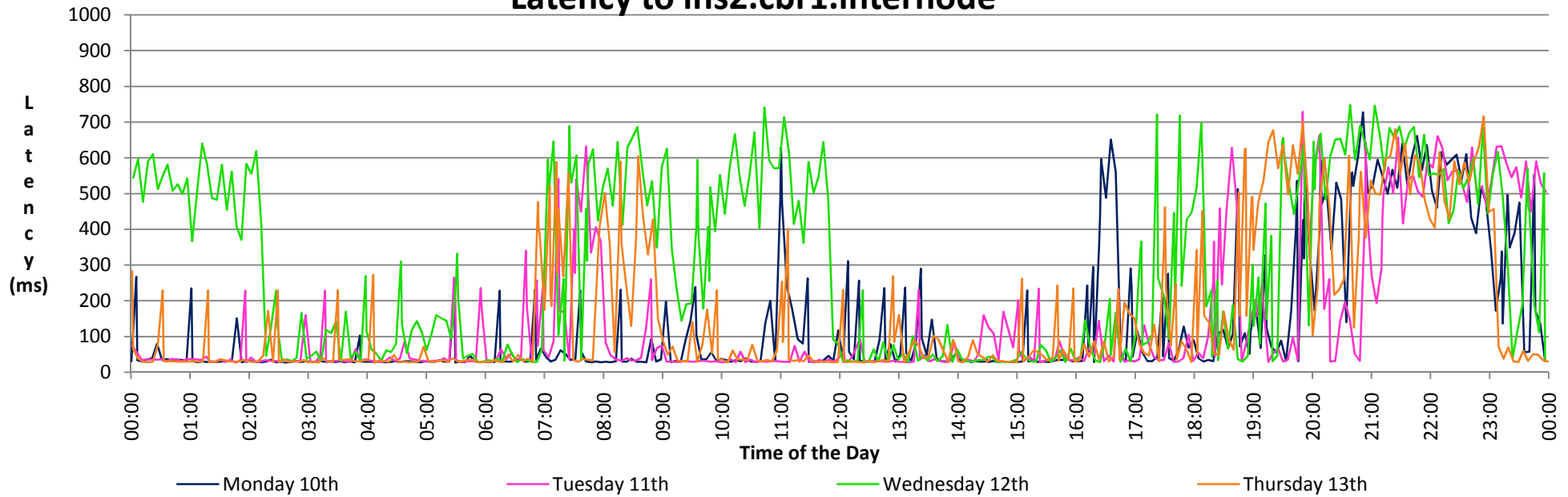
### Latency to Ins2.cbr1.internode



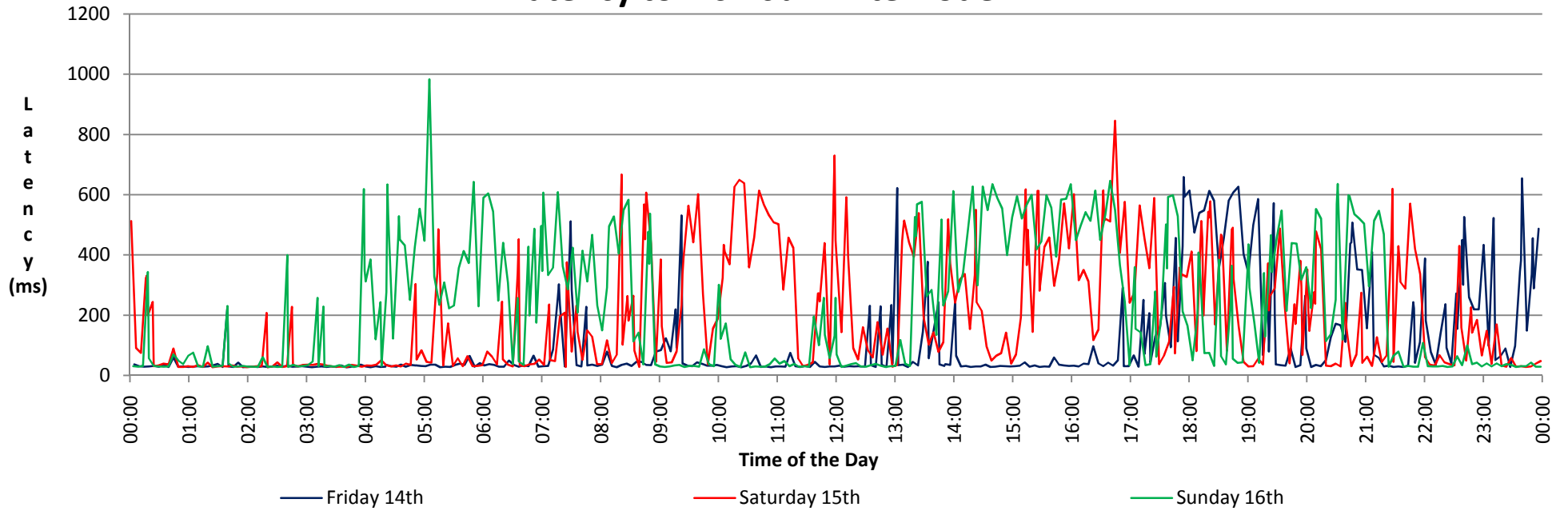
### Latency to Ins2.cbr1.internode



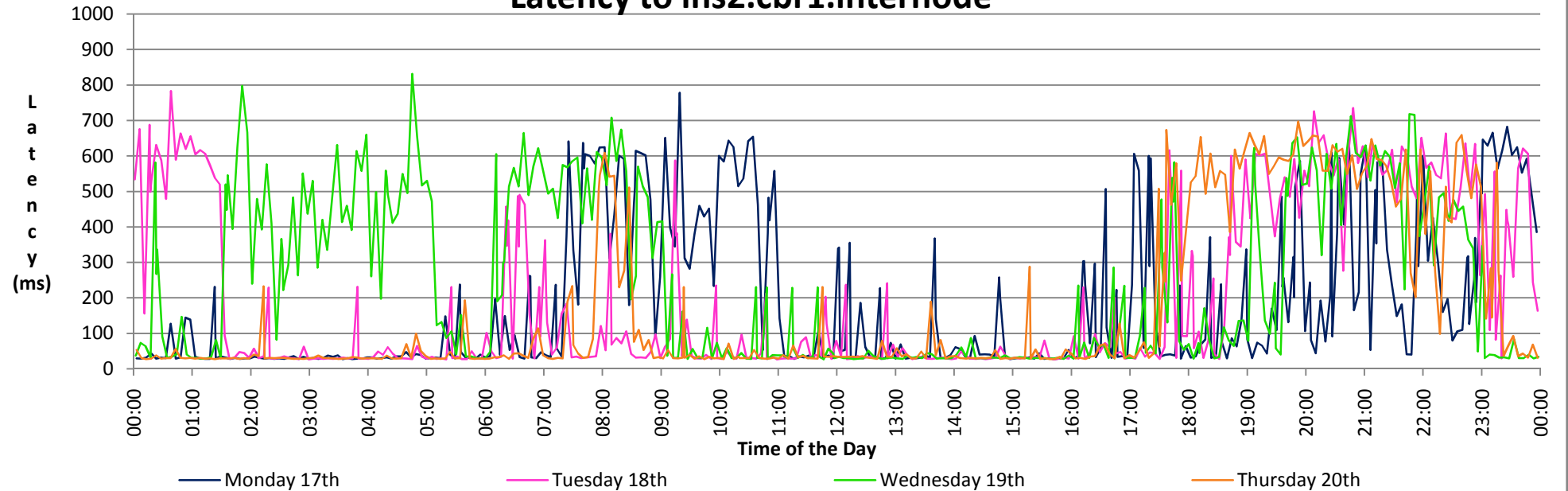
### Latency to Ins2.cbr1.internode



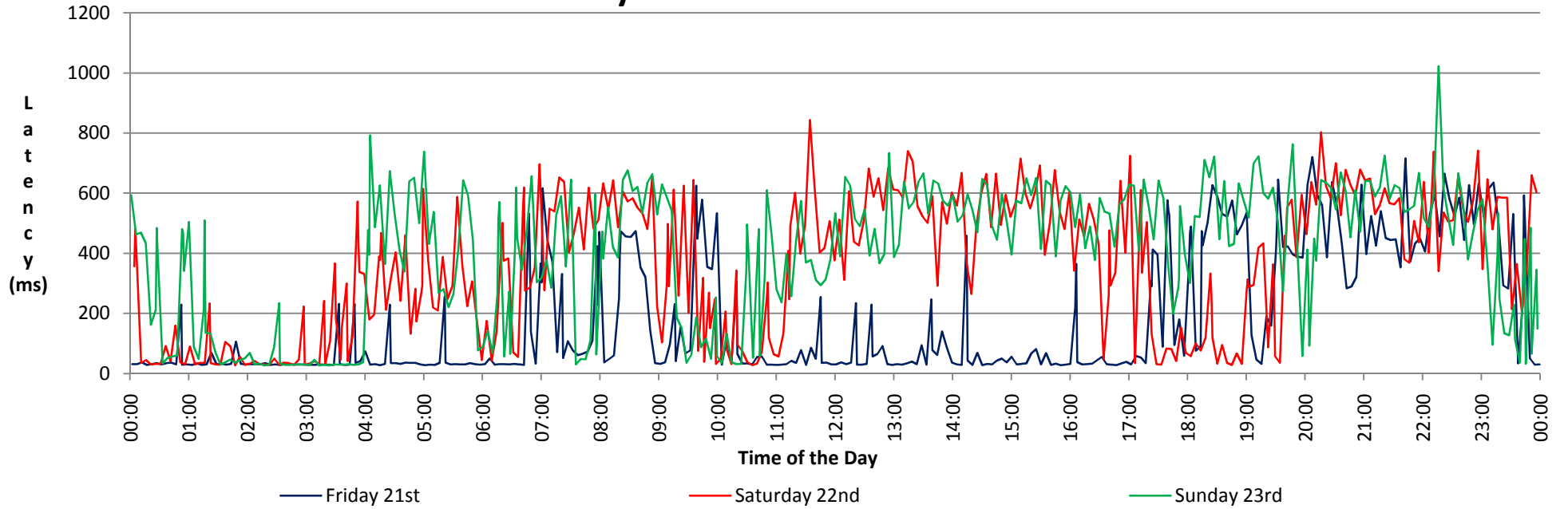
### Latency to Ins2.cbr1.internode



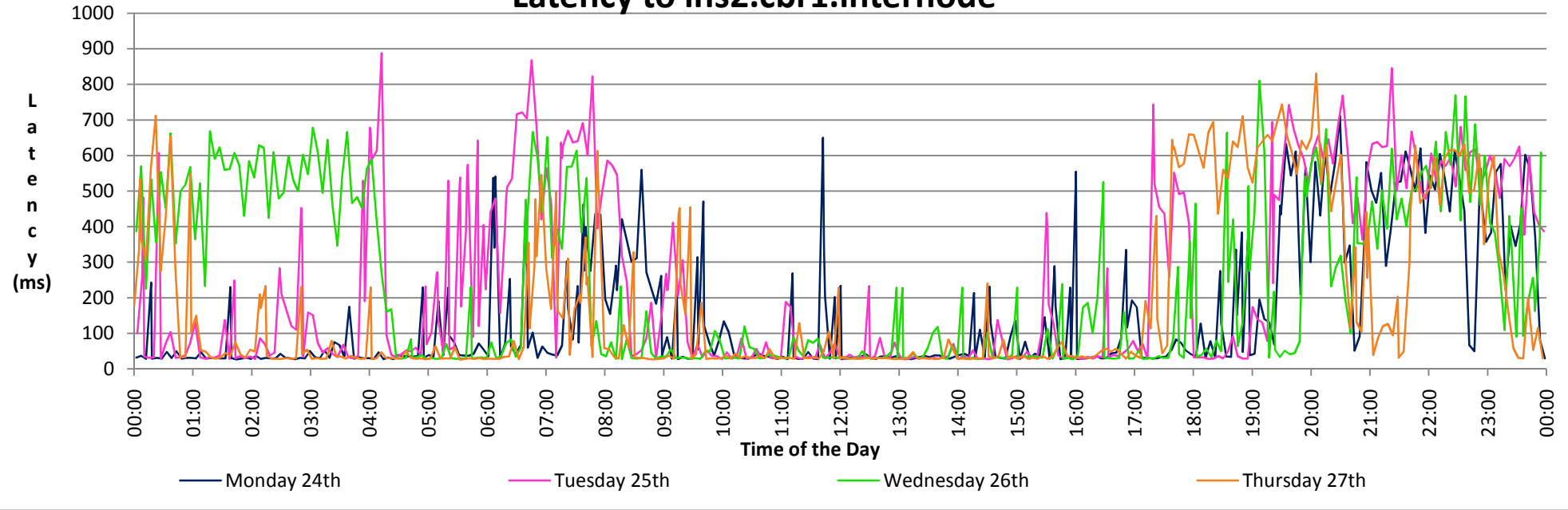
### Latency to Ins2.cbr1.internode



### Latency to Ins2.cbr1.internode



### Latency to Ins2.cbr1.internode



# Latency to Ins2.cbr1.internode

