

Network Statistics for Traffic to Ins2.cbr1.internode - July 2009

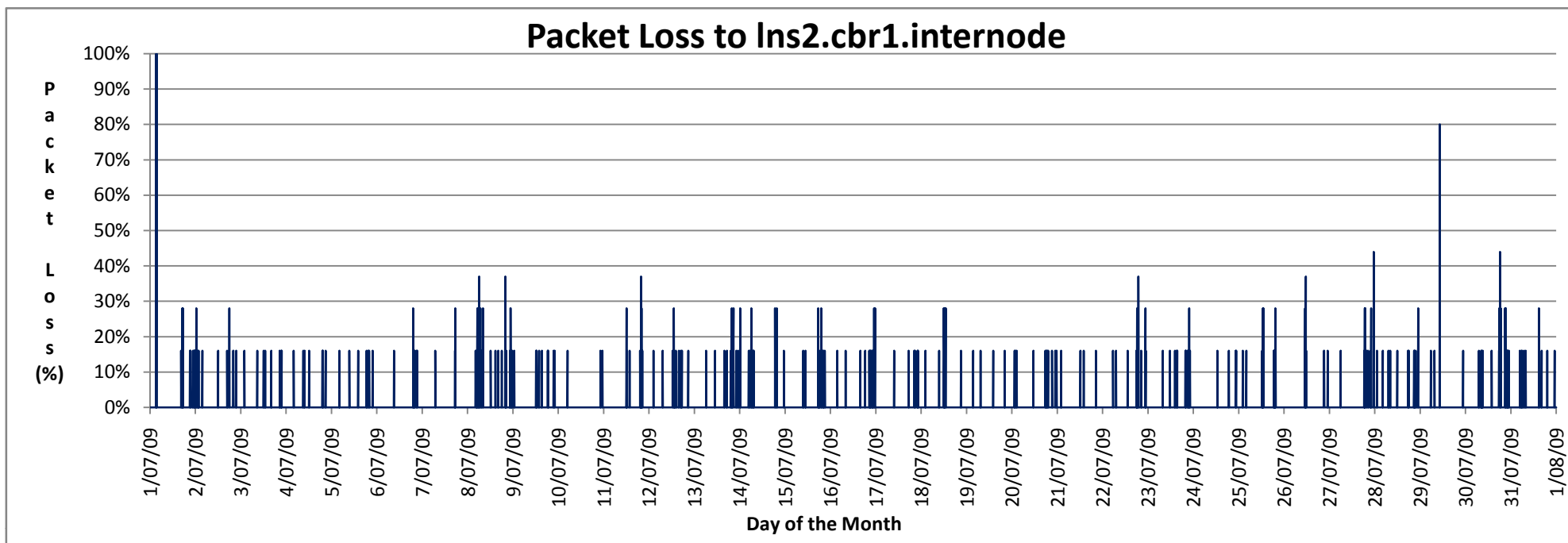
Overall Statistics - 1st July to 31 July 2009

Return Trip > 400ms	24.4%
Return Trip between 200ms - 400ms	13.8%
Return Trip < 200ms	61.9%
Probes with Packet Loss	3.0%

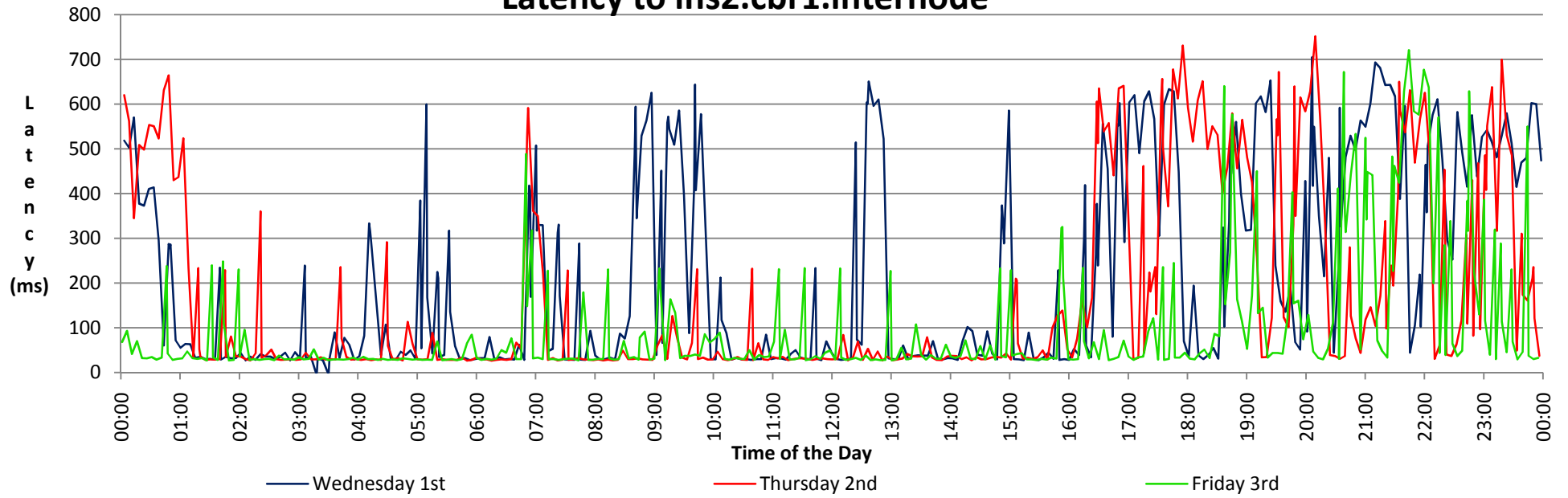
Peak Time Statistics - 1st July to 31st July 2009

Return Trip > 400ms	50.85%
Return Trip > 200ms	66.61%
Return Trip < 200ms	33.39%
Probes with Packet Loss	17.69%

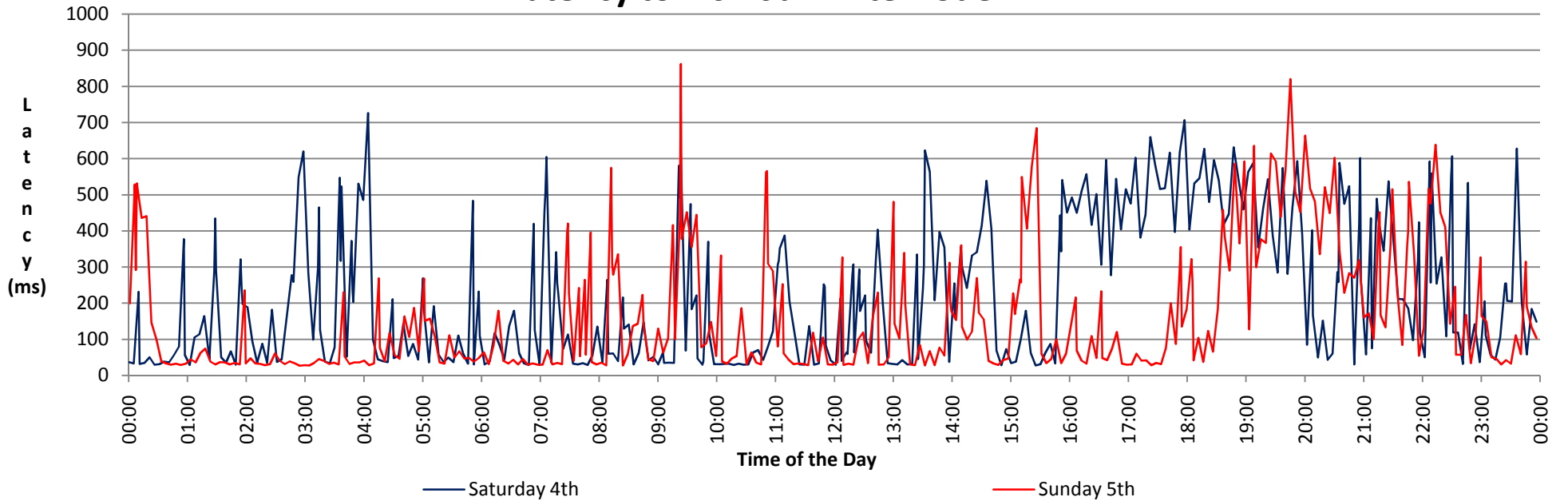
Trip Statistics	Time (ms)	Occurred at
Longest Return Trip Value	1071.81	6/7/2009 21:16
Shortest Return Trip Value	26.50	31/7/2009 14:17
Average Return Trip Time - Overall	205.65	
Average Return Trip Time - Peak	358.78	
Average Return Trip Time - Off Peak	174.41	



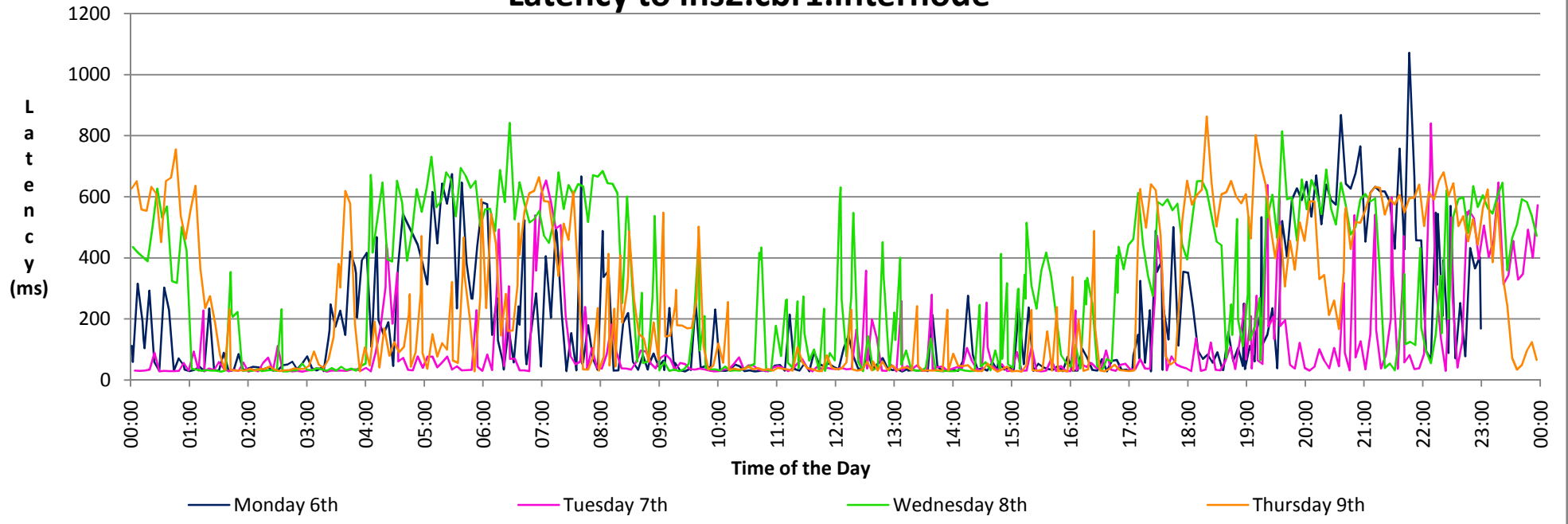
Latency to Ins2.cbr1.internode



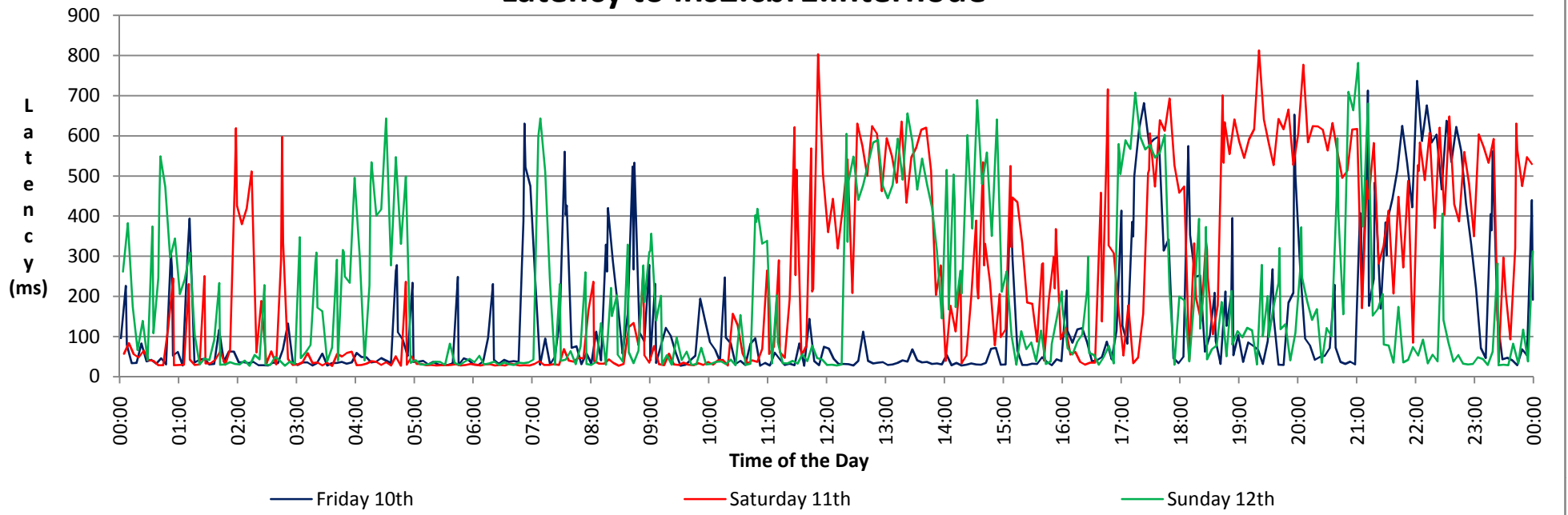
Latency to Ins2.cbr1.internode



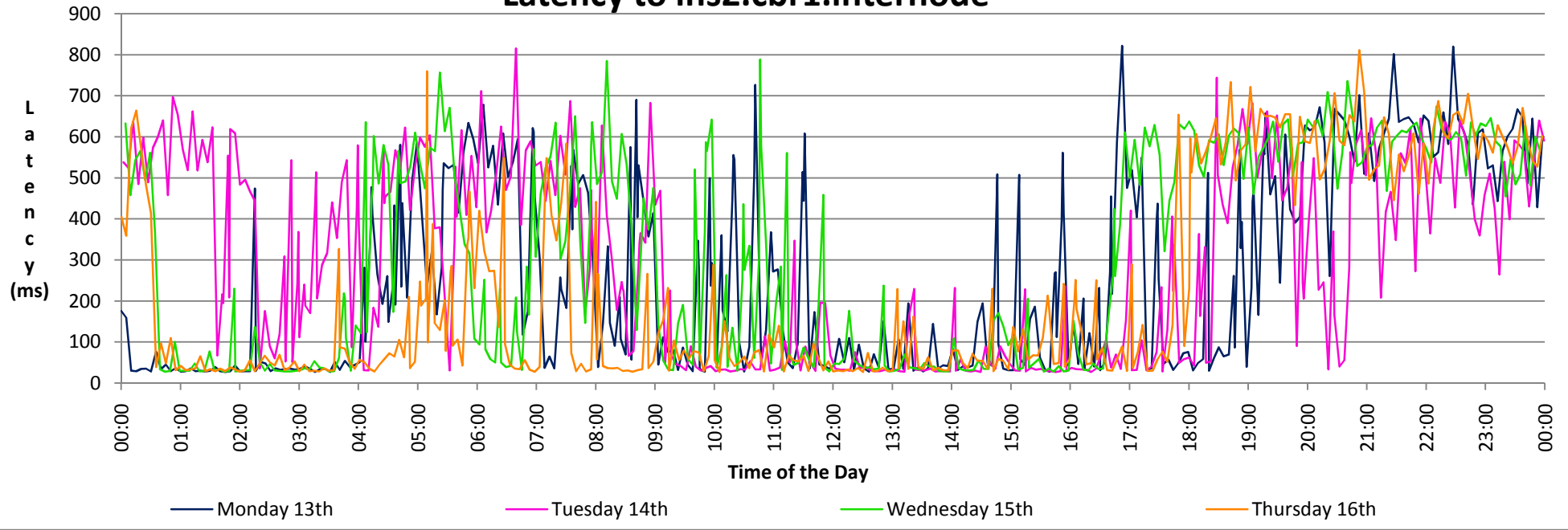
Latency to Ins2.cbr1.internode



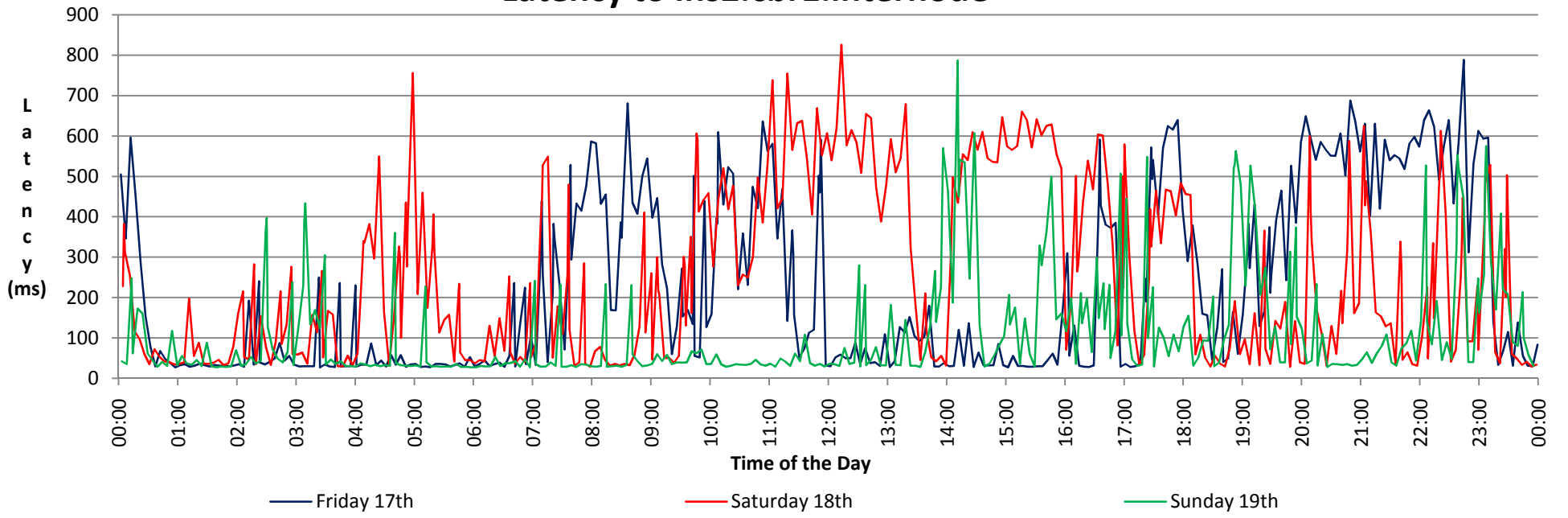
Latency to Ins2.cbr1.internode



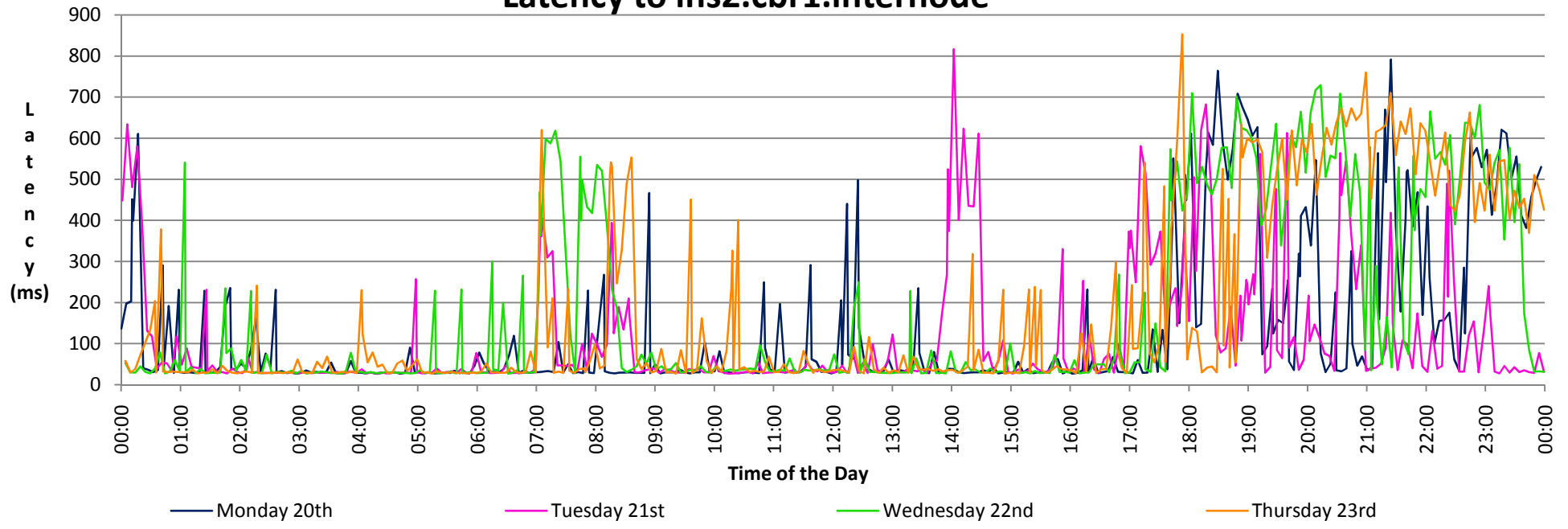
Latency to Ins2.cbr1.internode



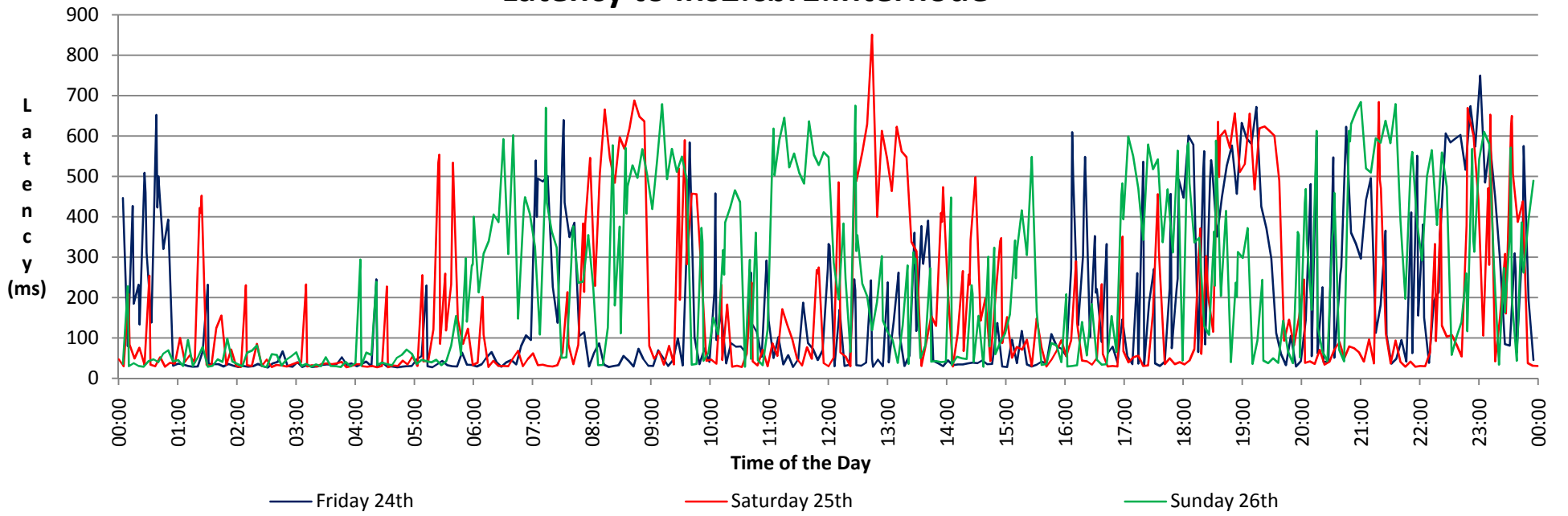
Latency to Ins2.cbr1.internode



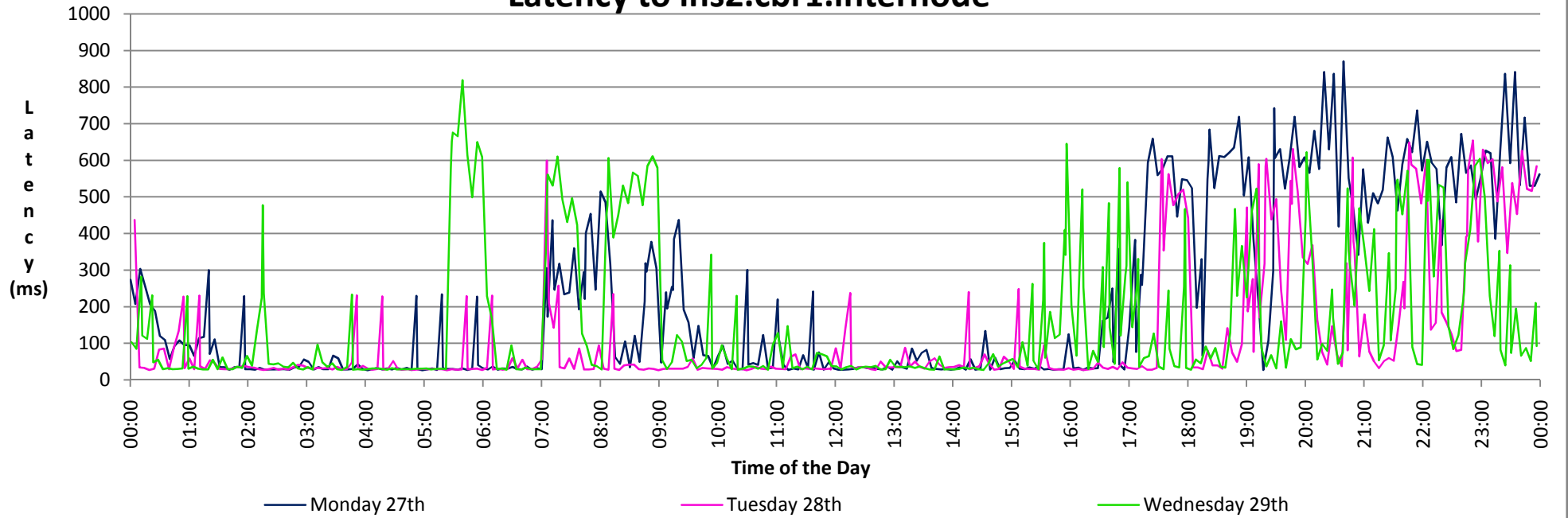
Latency to Ins2.cbr1.internode



Latency to Ins2.cbr1.internode



Latency to Ins2.cbr1.internode



Latency to Ins2.cbr1.internode

