

## Network Statistics for Traffic to Ins2.cbr1.internode - September 2009

### Overall Statistics - 1st September to 30th September 2009

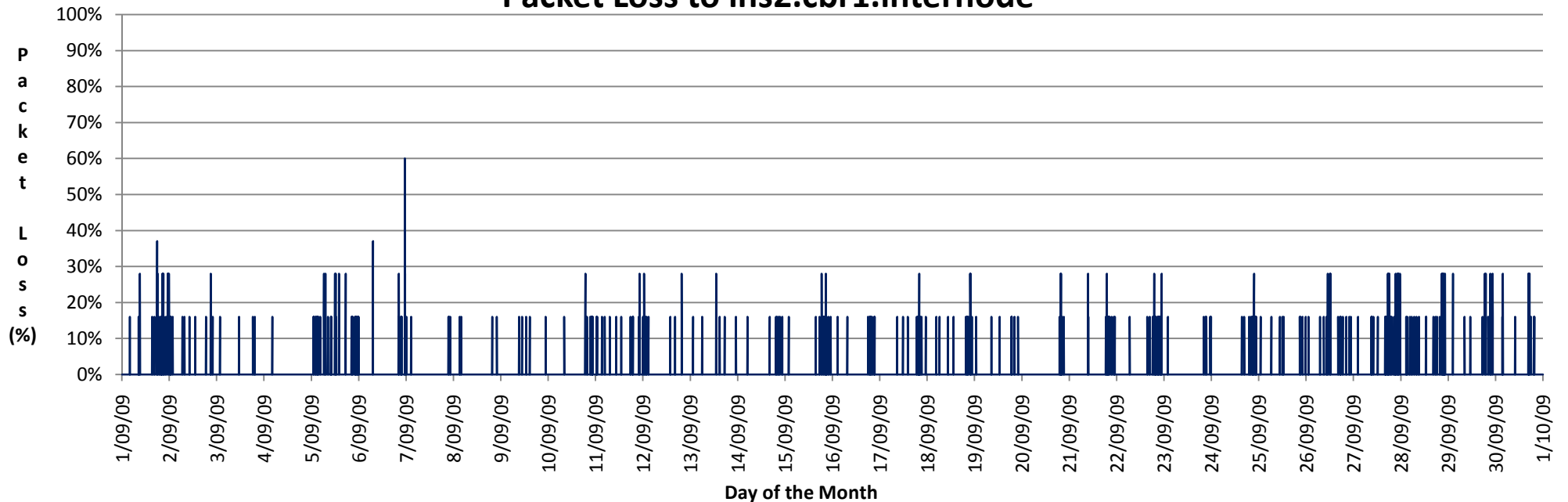
Return Trip > 400ms	27.7%
Return Trip between 200ms - 400ms	11.9%
Return Trip < 200ms	60.3%
Probes with Packet Loss	3.9%

### Peak Time Statistics - 1st September to 30th September 2009

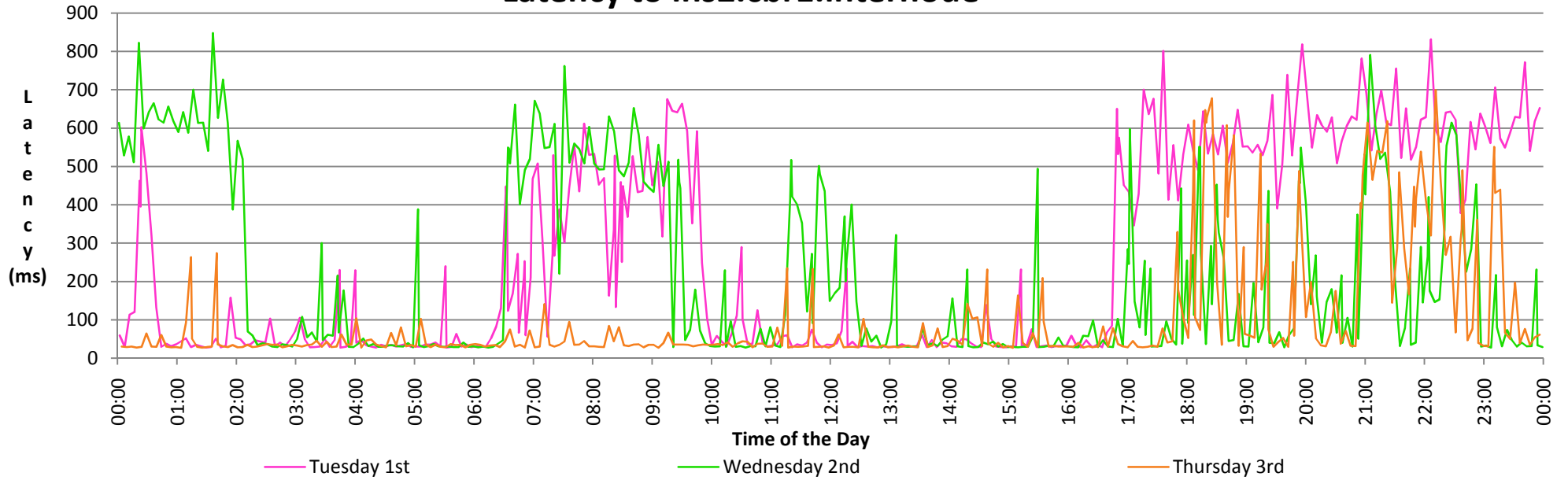
Return Trip > 400ms	56.21%
Return Trip > 200ms	71.43%
Return Trip < 200ms	28.57%
Probes with Packet Loss	23.27%

Trip Statistics	Time (ms)	Occurred at
Longest Return Trip Value	4524.98	6/9/2009 23:21
Shortest Return Trip Value	26.33	16/9/2009 1:01
Average Return Trip Time - Overall	221.25	
Average Return Trip Time - Peak	391.57	
Average Return Trip Time - Off Peak	186.98	

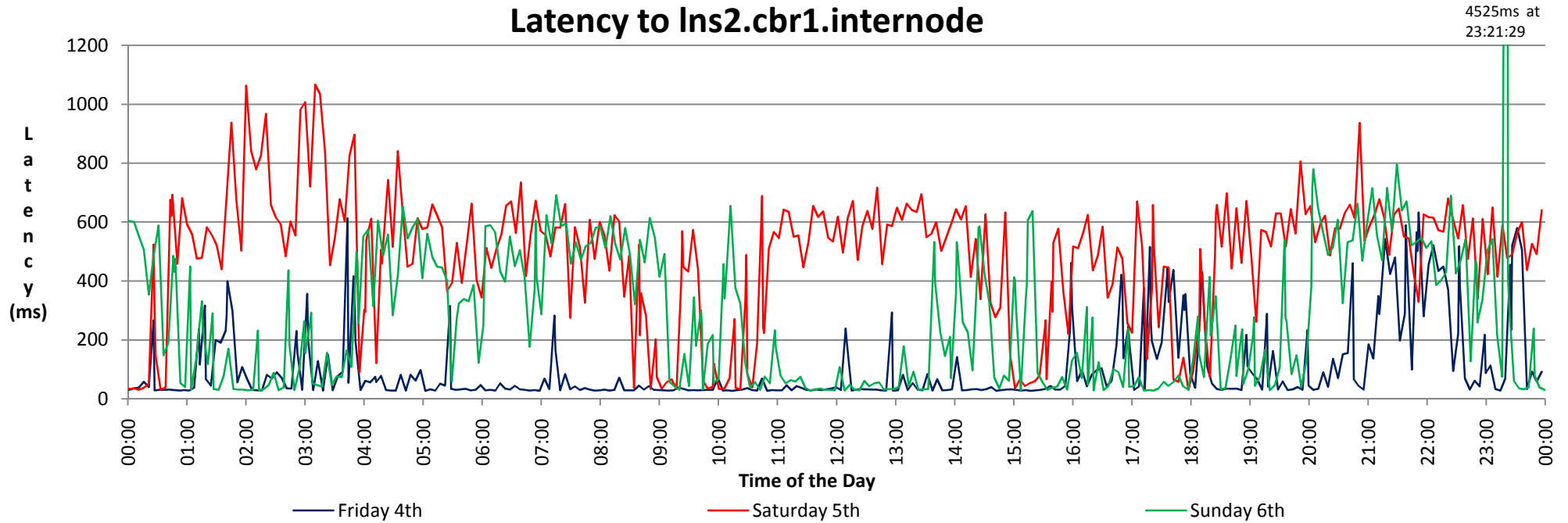
### Packet Loss to Ins2.cbr1.internode



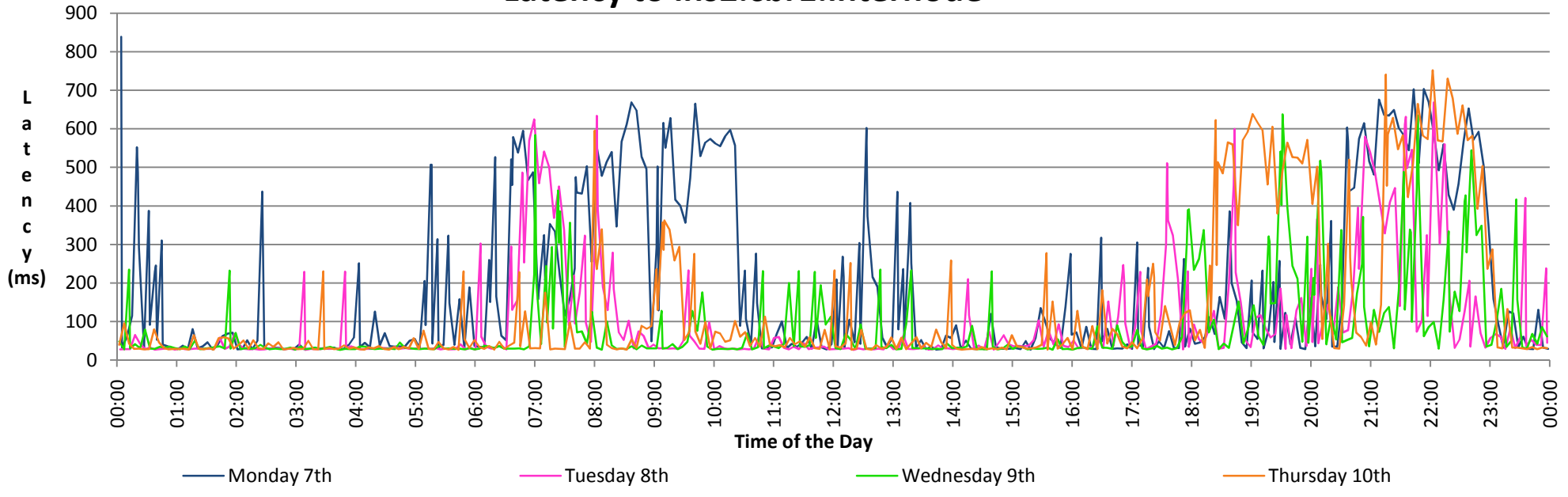
### Latency to Ins2.cbr1.internode



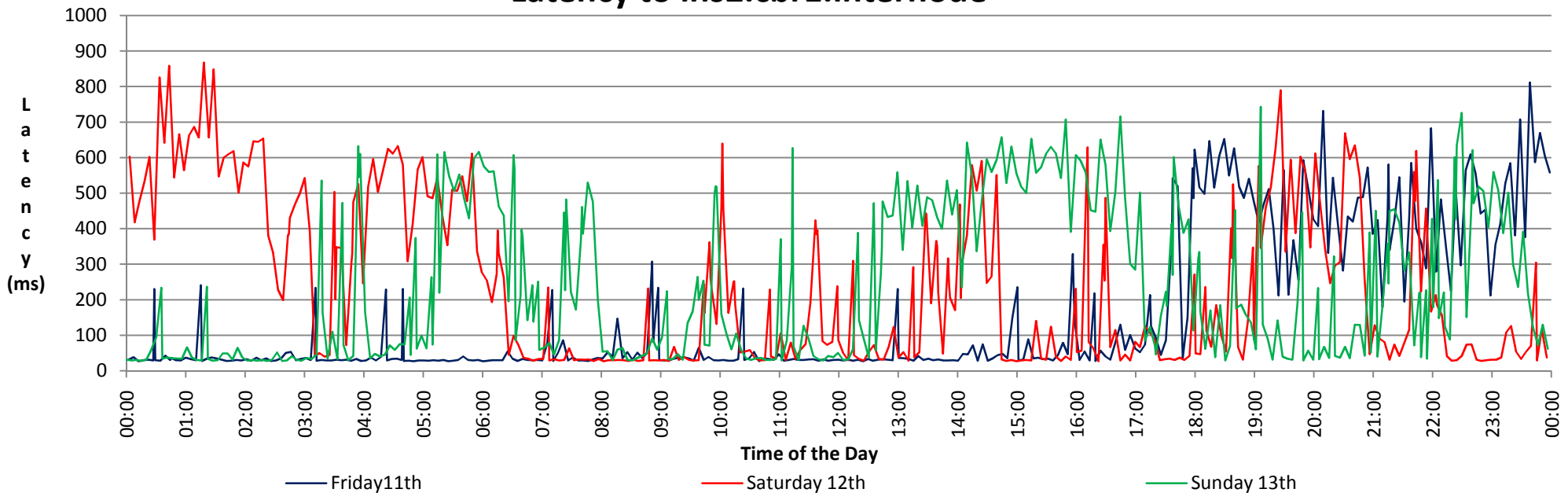
### Latency to Ins2.cbr1.internode



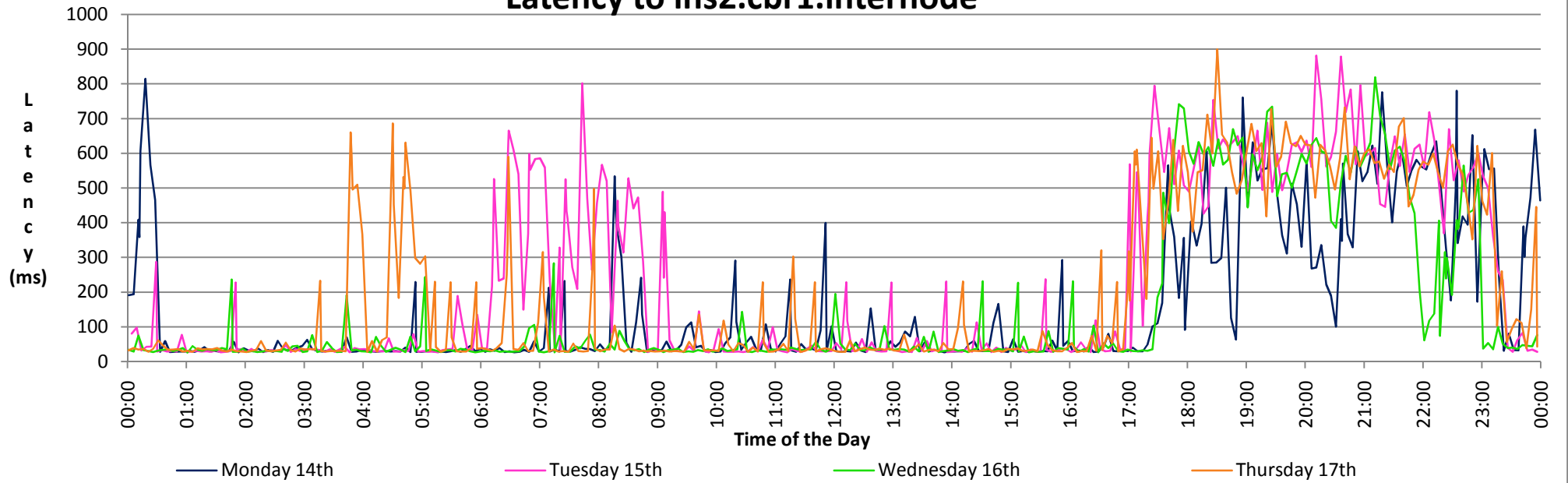
### Latency to Ins2.cbr1.internode



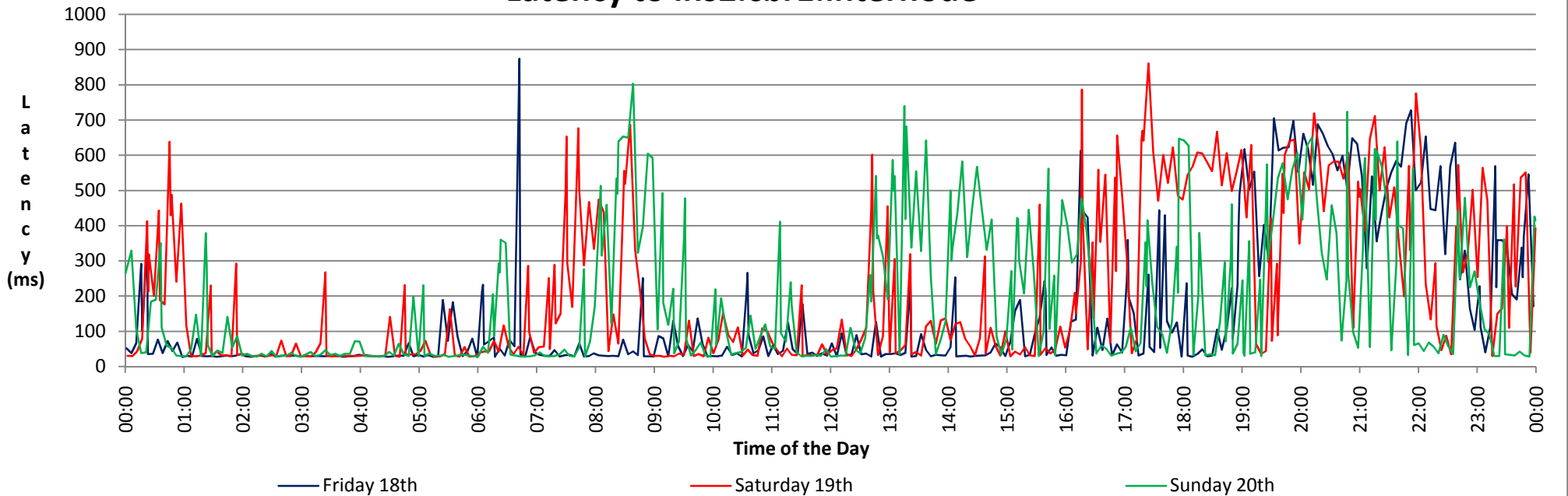
### Latency to Ins2.cbr1.internode



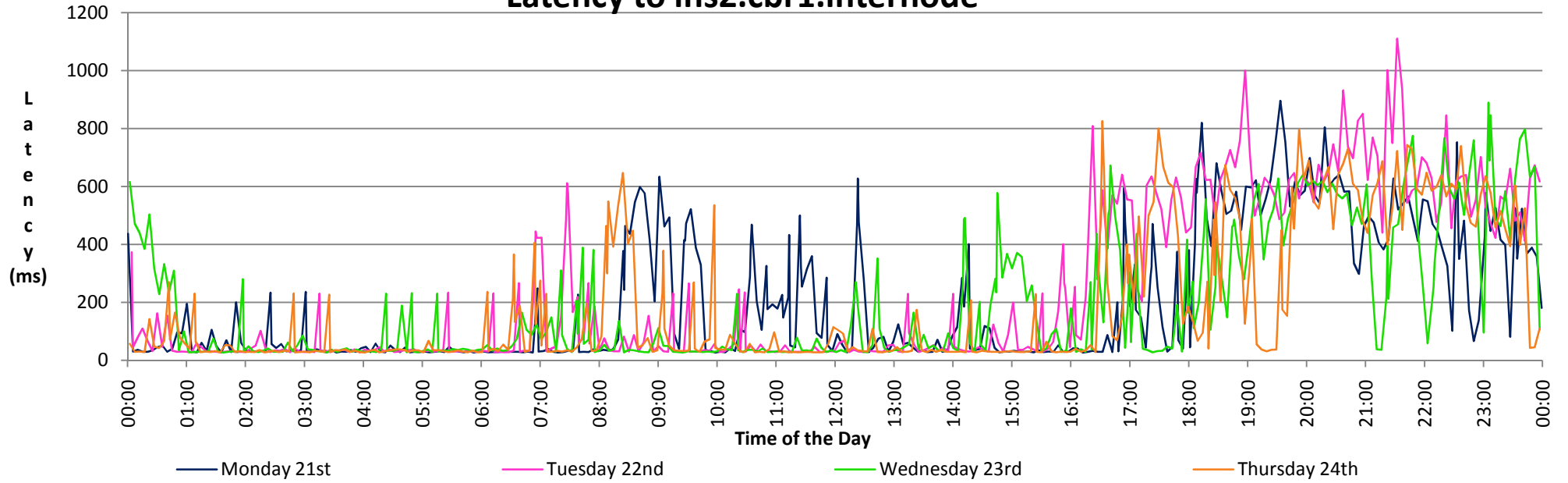
### Latency to Ins2.cbr1.internode



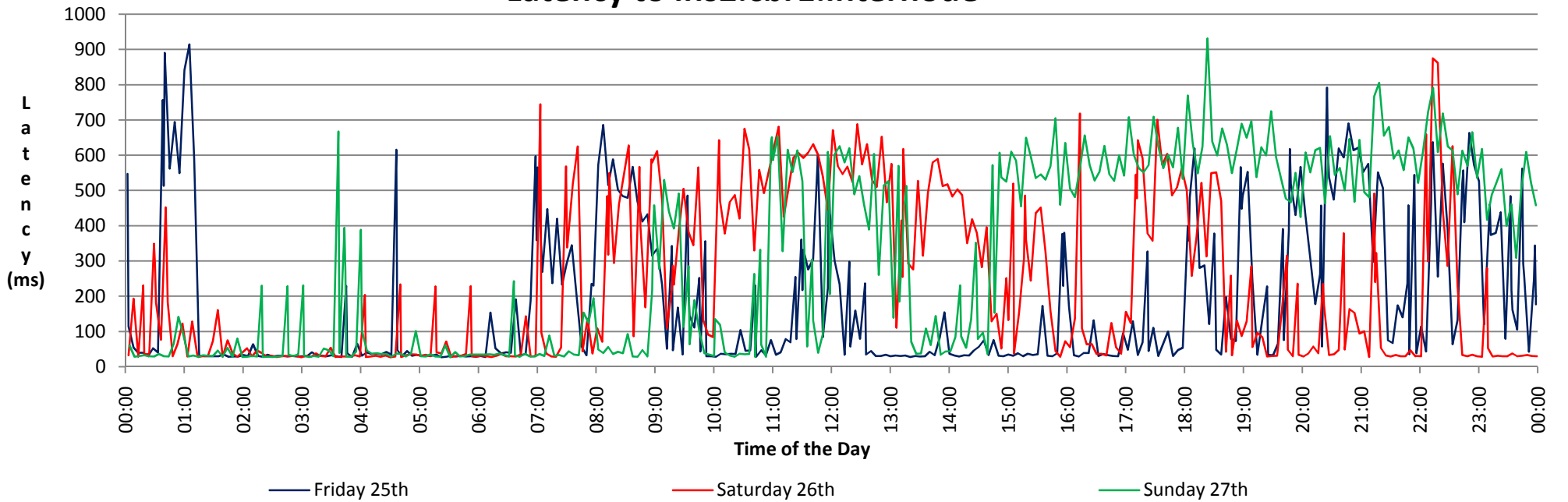
### Latency to Ins2.cbr1.internode



### Latency to Ins2.cbr1.internode



### Latency to Ins2.cbr1.internode



# Latency to Ins2.cbr1.internode

